

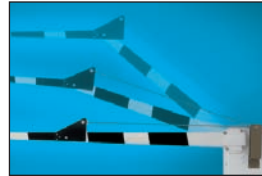
# 1601 PARKING CONTROL



# BARRIER GATE OPERATOR



**automatic p.a.m.s.**  
sequencing with slide and swing gates



**folding arm**  
kits available for low headroom applications



**barrier arms**  
available in aluminum/wood or plastic with optional foam padding



**fan/heater kits**  
options available for extreme weather conditions

- Designed for single lane (14 feet maximum) vehicular control in high traffic applications
- Electronic limit settings
- Operators are designed so that they can be mounted on either the left or right hand side of the roadway
- Available with a 14-foot aluminum or wood arm, or 12 foot plastic arm. A folding arm kit can be added for low headroom applications
- 360 degree gear box rotation provides for smooth operation and even wear, increasing the life span of the operator
- plug-in loop detectors simplify installation and wiring
- up input memory buffer
- down memory option

FEATURES

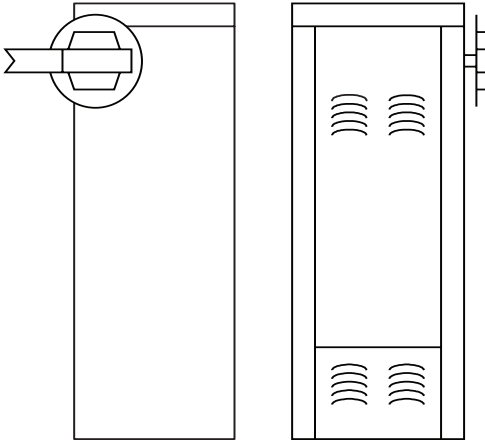
ACCESS CONTROL SOLUTIONS





# 1601 BARRIER GATE PARKING CONTROL

The Model 1601 Barrier Gate Operators are designed for high usage single lane (14 feet maximum) vehicular traffic control. Typical applications include commercial, industrial, gated communities and apartment complexes. A quick 1.5 second rotation opening time along with rugged construction and multiple optional features make this 1601 a versatile answer to many parking control problems.



**1601 1/2 HP**  
 15" W x 38" H x 15" D  
 38.1cm W x 96.5cm H x 38.1cm D

## 1601 Operator Specs

Class of operation	Max. arm length *	Primary reduction	Speed	HP	Power	DC Convenience Open Package
II, III, IV	14' (4.3m) wood 14' (4.3m) aluminum 12' (3.6m) plastic	40:1	90° approx 1.5 sec	1/2HP	115 VAC, 60 Hz, 5.4A 230 VAC, 60 Hz, 2.7A** 460 VAC, 60 Hz, 1.4A**	Optional

\* Folding arm kits available for low headroom requirements  
 \*\* These operators use a step-down transformer to achieve 115 VAC operating voltage

## General Specs

### Mechanical

Primary Reduction: 40:1  
 worm gear running in a continuous oil bath  
 Speed: Approximately 90° rotation in 1.5 sec  
 Housing: G90 galvanized steel painted white.

### Release Method

fail-secure mechanical

### Loop Detectors

Port for plug-in open (up) detector  
 Port for plug-in reverse (down) detector

### Standard Features

Electronic limits  
 Auto-close timer 1-23 seconds  
 P.A.M.S. (Perimeter Access Management System) sequence with a slide or swing gate operator  
 Left / right mount  
 360° gear box rotation before the motor changes direction. This provides for smooth operation, evens wear across the entire gear-box, and increases the life span of the operator

### Advanced Features

Up input memory buffer  
 Down memory option  
 Multiple up commands

### Options Available

Gate Tracker™ reporting output provides operator data to access control system (DKS 1833, 1835, 1837 or 1838 only)  
 Folding wood arm  
 Folding plastic arm  
 Heater kit and/or fan kit  
 Foam padding kit for wood or aluminum arm

### Safety Standards

Complies with the UL 325 and UL 991 safety standards  
 ETL listed

### Operating Temp

10°F to 140°F  
 -12°C to 62°C  
 Optional heater and fan kits available

### Shipping Weight

Approximately 140-160 lbs (63-72 kg)  
 Arm kit: 15 lbs (7kg)

### Warranty

5-year factory warranty

Distributed by:

**DOORKING, INC.**  
 120 Glasgow Avenue, Inglewood, California 90301 U.S.A. Tel: 310-645-0023 FAX: 310-641-1586 www.doorking.com  
 © 2006 All Rights Reserved. Product specifications may change without notice. Rev. 6/06

### MEMBER:

